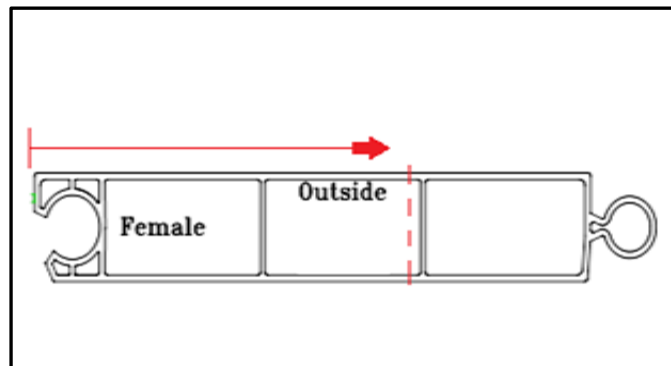


DRY FREIGHT TOP PANEL RESIZING INSTRUCTIONS

Parts list	Qty	Required Tools	Qty
Panel (non reinforced)	1	Skill saw with carbide blade	1
Panneau (non renforcé)	1	Perceuse avec tourne-écrou 1/4	1
Top seal (cap seal)	1	Drill with 1/4" nut driver	1
Matériel informatique	Qté.	Riveting tool with 1/8" head adapter	1
S.S. hex head self tapping screw	10	Pencil	10
Aluminum C Channels	4	Measuring tape	4
S.S. Stud plates	2	1/4" Drill bit	1
1/4 x .5" SS rivets	8		

Step 1

Cut the top panel according to the required height by measure the outside female edge of the panel of the panel and drawing a straight line across the outside length.



Step 2

Cut the height of the panel using the skill saw and following the marked line.



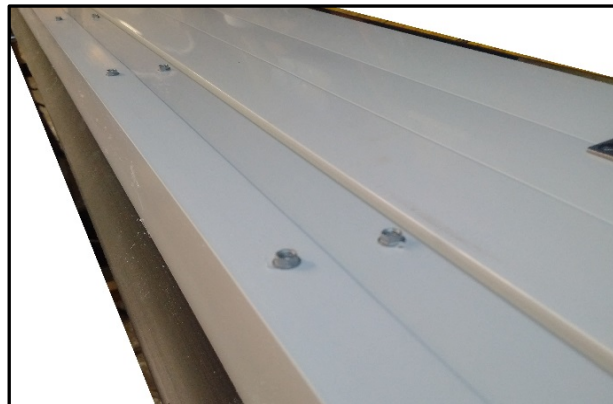
Step 3

Slide the top cap seal over the cut edge of the panel with the black flex seal facing out.



Step 4

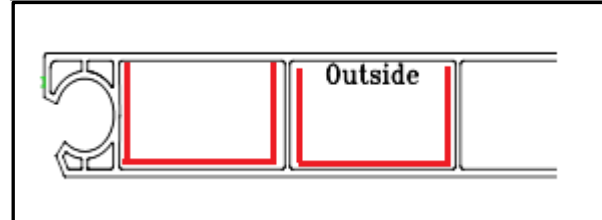
Attach the seal on the inside of the panel using the S.S hex head screws found in the hardware bag



Step 5

Insert two "C" Channels into the first 2 uncut pvc chambers under the top seal. Repeat on alternate.

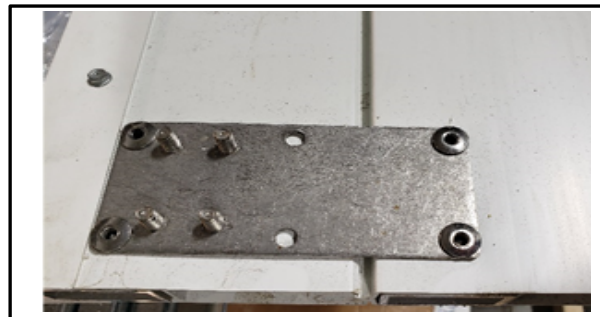
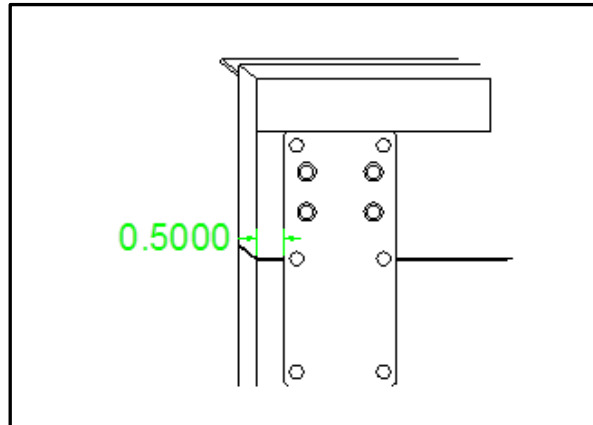
Check to make sure that the flat opening of the "C" channels faces the outside of the panel




Step 6

Place the stud plate against the leg of seal and 0.5" inward from the ends of the panel and drill out four holes using the 1/4" drill bit. The holes must line up with the aluminum inside.

Attach the stud plate (as shown below) using the 1/4 x .5" rivets provided.



<p>Step 7 Write or attach the serial number underneath the serial number label for future identification.</p>	<div data-bbox="808 233 1240 663"><p>MCLAREN DOORS Serial No.</p><p>For technical support, call 1-877-263-9153 or visit www.mclarendoors.com</p><p>Caution: Use proper lifting techniques when opening and closing the door. Do not stand under the door during operation. Inspect door prior to use, if damaged, discontinue use until repaired. Do not hang from the door or door hardware. Contact technical support if the door is not operating correctly and prior to putting on decals for best results. Door should not be put in paint oven. Do not exceed temperature rating of 165F. If this label becomes damaged, replace immediately before operating.</p><p>Maintenance: To ensure easier repairs, make sure to grease the counterbalance regularly. If door becomes heavy to lift, counterbalance may require adjustment. Do not grease rollers or track to avoid friction build-up.</p><p>TOGETHER WE ROLL</p></div>
--	--

For assistance contact technical support at 877-263-9153 or visit our website at www.mclarendoors.com