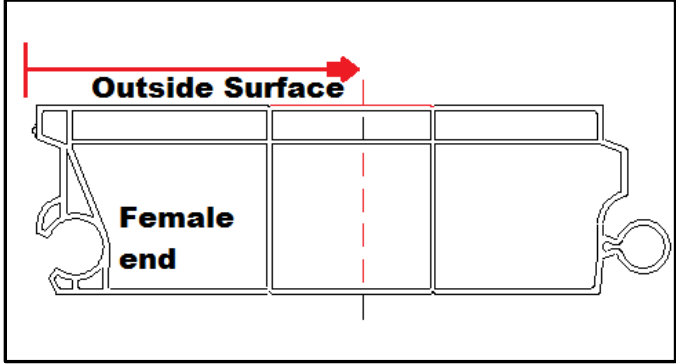


INSULATED MODELS

Top Panel Instructions

Parts List	Qty.	Required Tools	Qty.
Panel (with reinforcement)	1	Skill saw with carbide blade	1
Panel (non reinforced)	1	Drill with 1/4" nut driver	1
Top seal (cap seal)	1	Riveting tool with 1/8" head adapter	1
Hardware	Qty.	Pencil	1
S.S. hex head self tapping screw	10	measuring tape	10
Aluminum Flat Bar	4	Hammer	4
S.S. Stud plates	2	1/4" Drill bit	1
1/4 x .5" SS rivets	8		

<p>Step 1</p> <p>Cut the top panel according to the required height by measure the outside female edge of the panel of the panel and drawing a straight line across the outside length.</p>	 <p>The diagram shows a cross-section of a door panel with a top flange. A red arrow labeled 'Outside Surface' points to the top edge of the flange. A vertical dashed line is drawn across the panel, and the left side of the panel is labeled 'Female end'.</p>
--	--

Step 2

Cut the height of the panel using the skill saw and following the



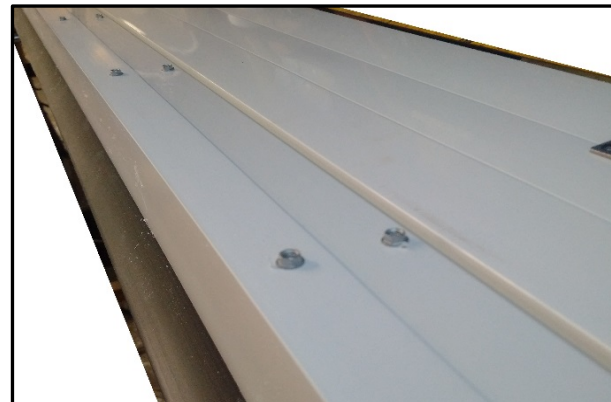
Step 3

Slid the top cap seal over the cut edge of the panel with the black flex seal facing the outside surface.



Step 4

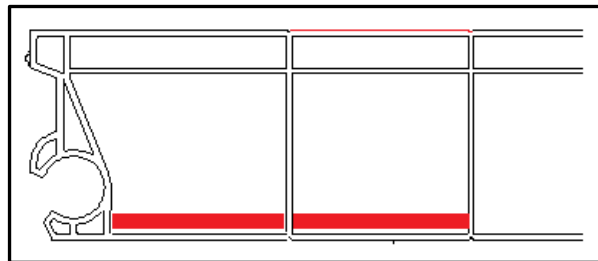
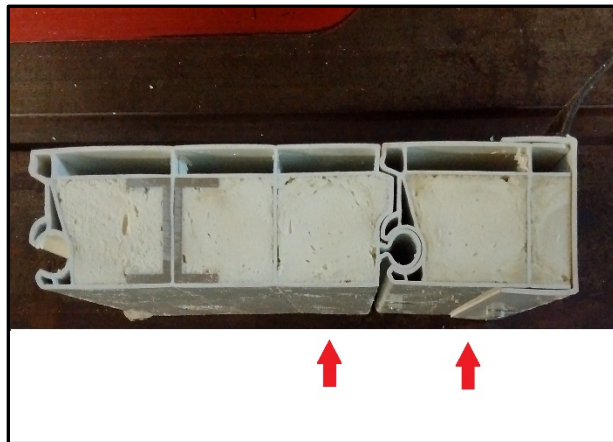
Attach the seal on the inside of the panel using the S.S hex head screws found in the hardware bag



Step 5

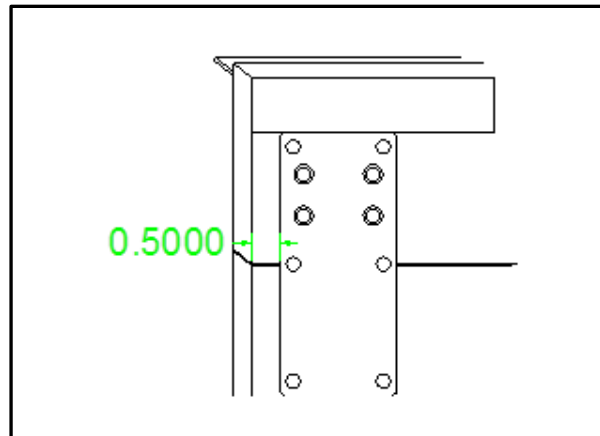
Insert two flat bar into the first 2 uncut pvc chambers under the top seal. Repeat on alternate. A hammer must be used to insert the channels on the insulated models

***Make sure that the flat bar is installed against the interior wall of the inside surface of the panel. Shown below.*

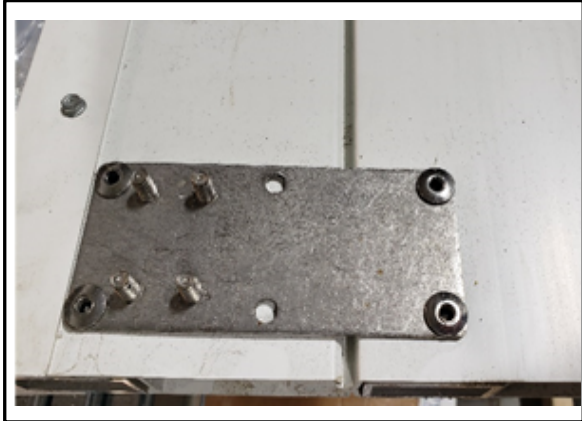


Step 6

Place the stud plate against the leg of seal at the ends of the panel and drill out four holes using the 1/4" drill bit. **The holes must line up with the aluminum flat bar**



Step 7
 Attach the stud plate (as shown below) using the 1/4 x .5" rivets provided.



Step 8
 Write or attach the serial number underneath the serial number label for future identification.

MCLAREN DOORS Serial No.

For technical support, call 1-877-263-9153
 or visit www.mclarendoors.com

Caution:
 Use proper lifting techniques when opening and closing the door.
 Do not stand under the door during operation.
 Inspect door prior to use. If damaged, discontinue use until repaired.
 Do not hang from the door or door hardware.
 Contact technical support if the door is not operating correctly and prior to pulling on decals for best results.
 Door should not be put in paint oven. Do not exceed temperature rating of 165F.
 If this label becomes damaged, replace immediately before operating.

Maintenance:
 To ensure easier repairs, make sure to grease the counterbalance regularly.
 If door becomes heavy to lift, counterbalance may require adjustment.
 Do not grease rollers or track to avoid friction build-up.


 TOGETHER WE ROLL

For additional assistance call 1-877-263-9153 or email info@mclarendoors.com